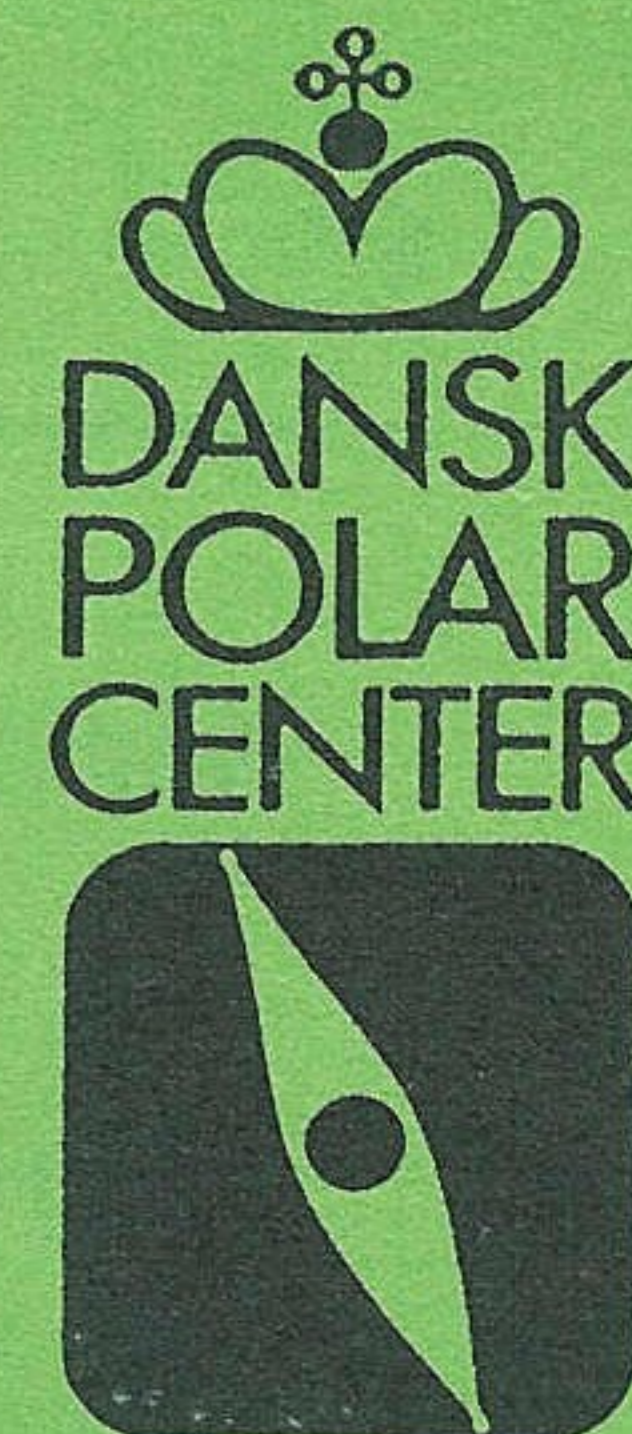


NEWSLETTER



From The Danish Polar Center &
The Commission for Scientific Research in Greenland

Strandgade 100H, DK-1401 Copenhagen K, Denmark

Phone +45 32 88 01 00. Fax +45 32 88 01 01

ISSN 0905-8915

FEBRUARY 1995

No. 26

Contents

Members of the Commission	2	Special publications	32
Scientific news	3	Conferences	34
Research projects with economic support granted by the Commission ..	9	Miscellaneous	36
Research projects reported to the Danish Polar Center	20	Abstracts service	37

Editorial

The editor humbly apologizes for the delay in issuing the latest copy of NEWSLETTER, which concludes the year 1994 - and for printing the wrong heading above the section on research funding in the previous issue. The projects listed there were not funded by the Commission, only reported to the Danish Polar Center.

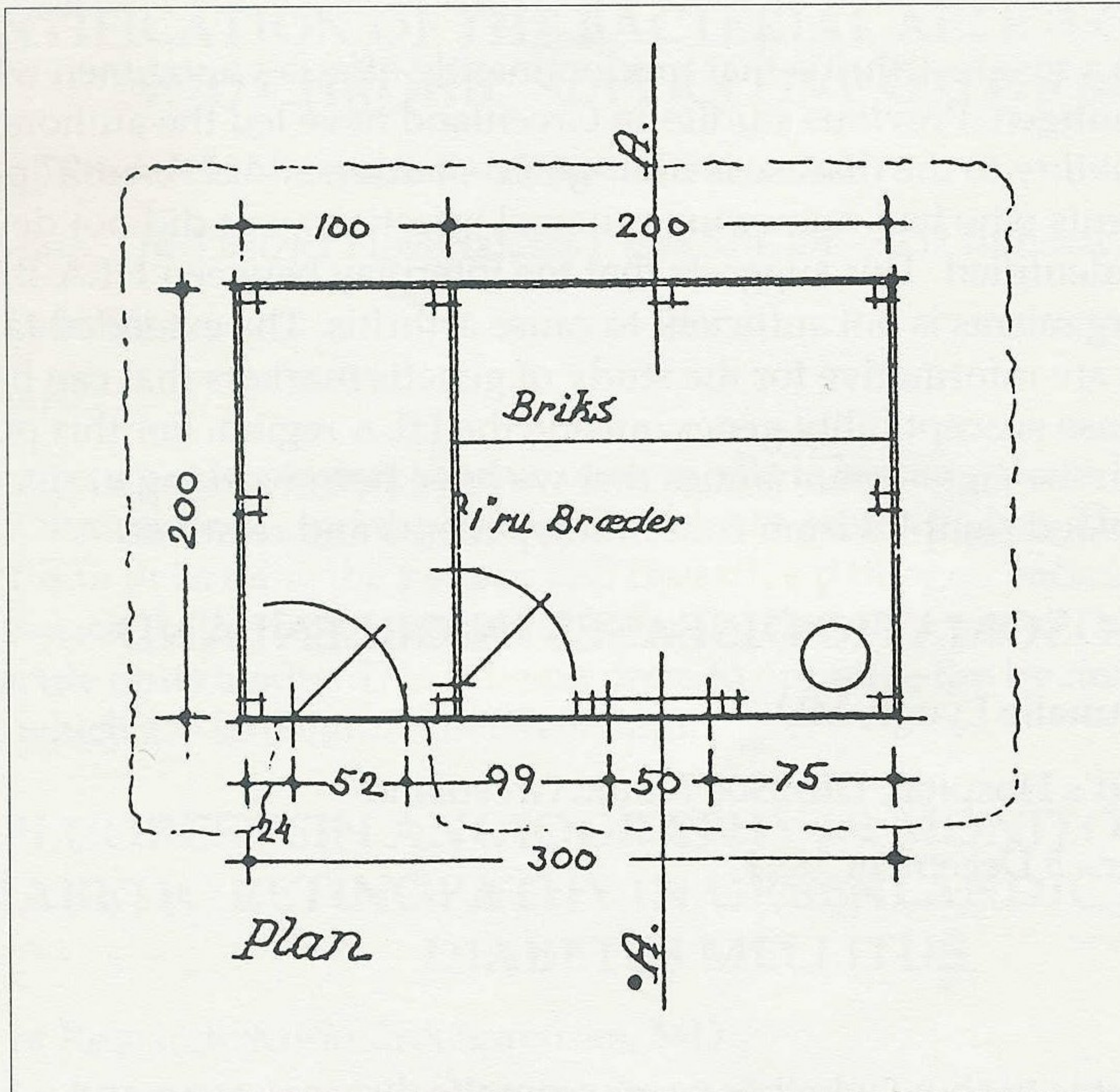
In this issue we have a feature on the establishment of the new Zackenberg field station and on the Danish Polar Center initiative creating a logistics research platform in support of the future work in North East Greenland. There is a report on the progress of the GRIP project at the Summit drill site. And last, but not least, we have the

latest news from the NSN and ITEX activities.

The Danish Polar Center Annual Report 1993 is available in English. Please find the order slip on page 40. A new, important topographical map of Greenland (scale 1:2,500,000) has been published. It includes corrected coastlines and coordinates as well as the Greenlandic place names in the new orthography. Indispensable to anyone dealing with Greenland!

Editor: Kirsten Caning

Special publications



Standard design for the shelters registered in the book of Peter Schmidt Mikkelsen

New reference work on North East Greenland

Peter Schmidt Mikkelsen: Nordøstgrønland 1908-60, fangstmandsperioden. Danish Polar Center, 1994. 408 pp. illustrations and maps. DKr 398 plus postage.

An amazing amount of information about buildings (houses and huts) in North East Greenland is presented in this book, published by the Danish Polar Center. The author is Peter Schmidt Mikkelsen, who used to be a sledge driver in the military patrol Sirius. During his years of service in North East Greenland he was fascinated by the many shelters spread along the coast. No mat-

ter how primitive and small they were, they were "home" in the middle of the monumental surroundings. And they were also historical monuments to the lives of many men (and two women) who made a living harvesting the fruits of the land. The author spent several years collecting information, including the hunters' original diaries and photographs. Approximately 300 buildings are described in the book, and most of them are accompanied by photos, where possible both an historical and a recent one to help visitors to find the exact spot again. The book is in Danish.